

Innovation and Issues



SunPlus

Montenegro, 2019



Acts 20:9



And there sat in a window a certain young man named Eutychus, being fallen into a deep sleep: and as Paul was long preaching, he sunk down with sleep, and fell down from the third loft, and was taken up dead.

SunPlus





Environment of Great Innovation

SUNPLUS



SDA and Innovation

- .- Optimized Communication
- .- AI and Machine Learning (Social Media & Comm.)
- .- More security Measures
- .- 3D Printing
- .- Cloud Computing
- .- Business Continuity





Business Continuity

SunPlus



Business Continuity



On-Premise

VS.



Cloud



Business Continuity

CARBONITE Server Backup
Powered by EVault

Dashboard Computers Monitor Reports Policies Users

Actions

Name Description

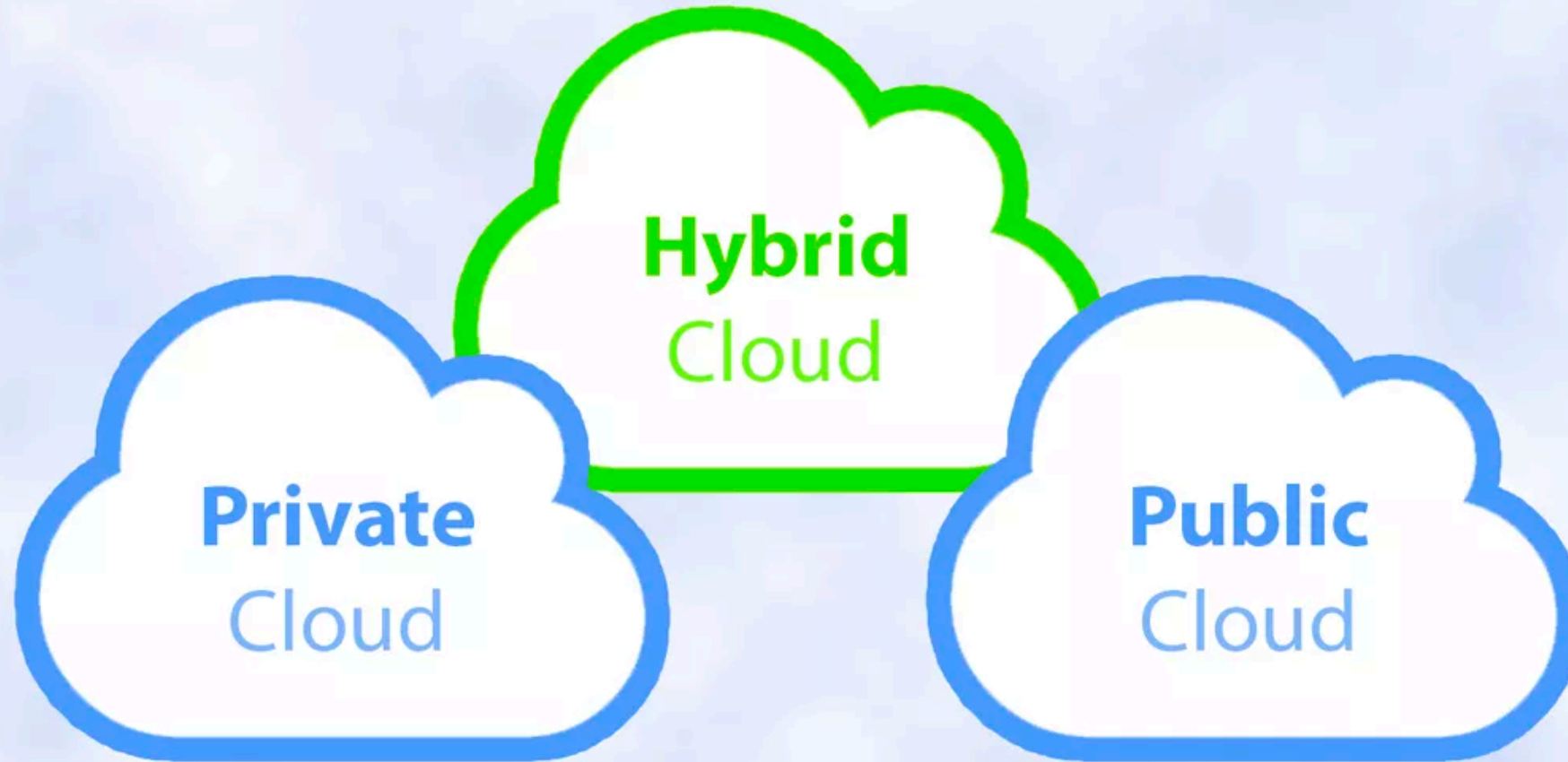
Global 256-bit Encryption Yes

Policy Options Notifications Performance Vaults Common Retention Types Inclusions/Exclusions

Retention Name	Days Online	Copies Online
Daily	30	30
Weekly	31	5
Monthly	365	12



Cloud Computing



Cloud Computing

.- Private Cloud: SunPlus Cloud

.- Public Cloud: Microsoft Azure

SunPlus





SunPlus



Cloud Computing Benefits

- Universal Access
- Increases Mobility and Productivity
- Increase Collaboration
- More Storage and Capacity
- Easy Setup
- Automatic Updates
- Cost Effective



Cloud Computing Myths

- Cloud migration is too complex
- Keeping data on-premises is safer
- There's nothing private about the cloud
- Dealing with the cloud is just another hassle
- It's cloud or nothing
- Continuous updates can break business-critical apps



Cloud Computing Risks

- Internet related risks: Virus, Malware, Man in the Middle attack.
- Social Engineering
- Privacy Issues
- Control Issues
- Internet Reliance
- Cloud Provider Reliability



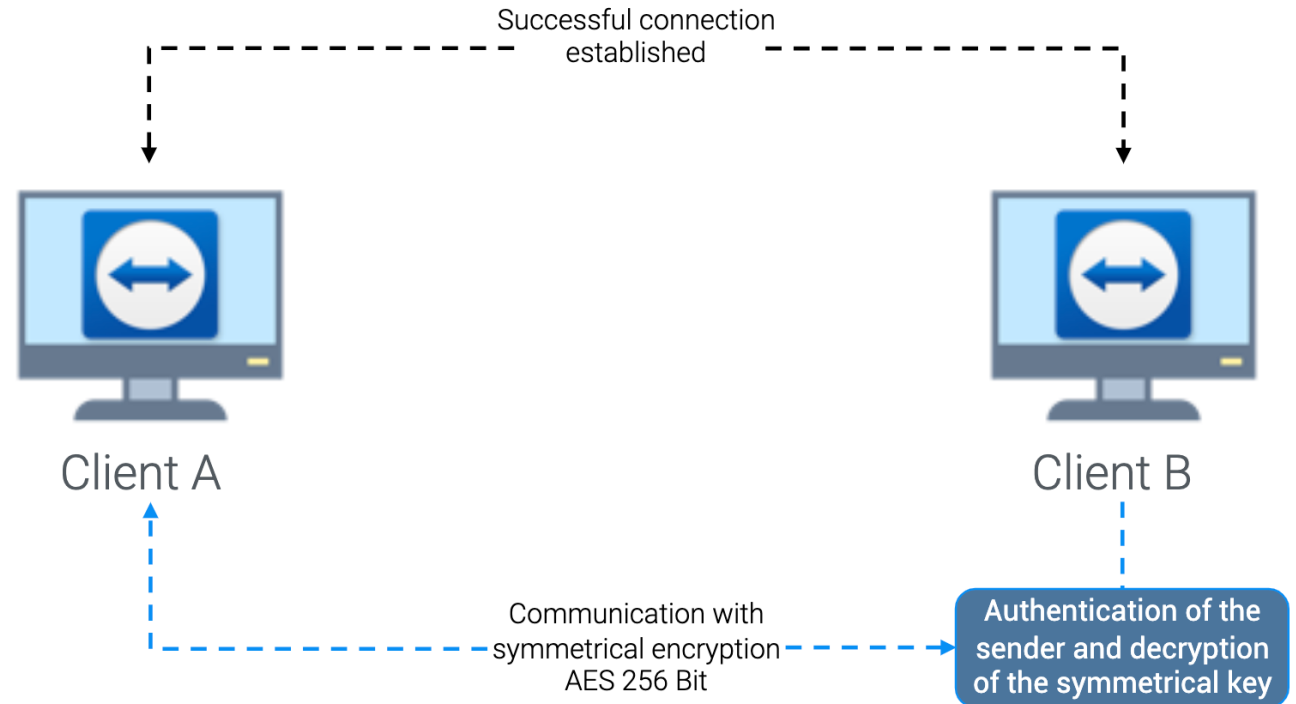
TeamViewer Encryption & Authentication

Private key never leaves client machine

TeamViewer operators of routing servers cannot decipher encrypted data stream

Benefits

- During authentication, the password is never transferred directly because the Secure Remote Password (SRP) protocol is used
- Symmetrical encryption allows fast P2P connection with end to end encryption
- The PKI (Public Key Infrastructure) effectively prevents "man-in-the-middle" attacks
- Rest of the connections are routed through our highly redundant router network via TCP or https-tunneling



TeamViewer Application Security

Working together to secure your enterprise

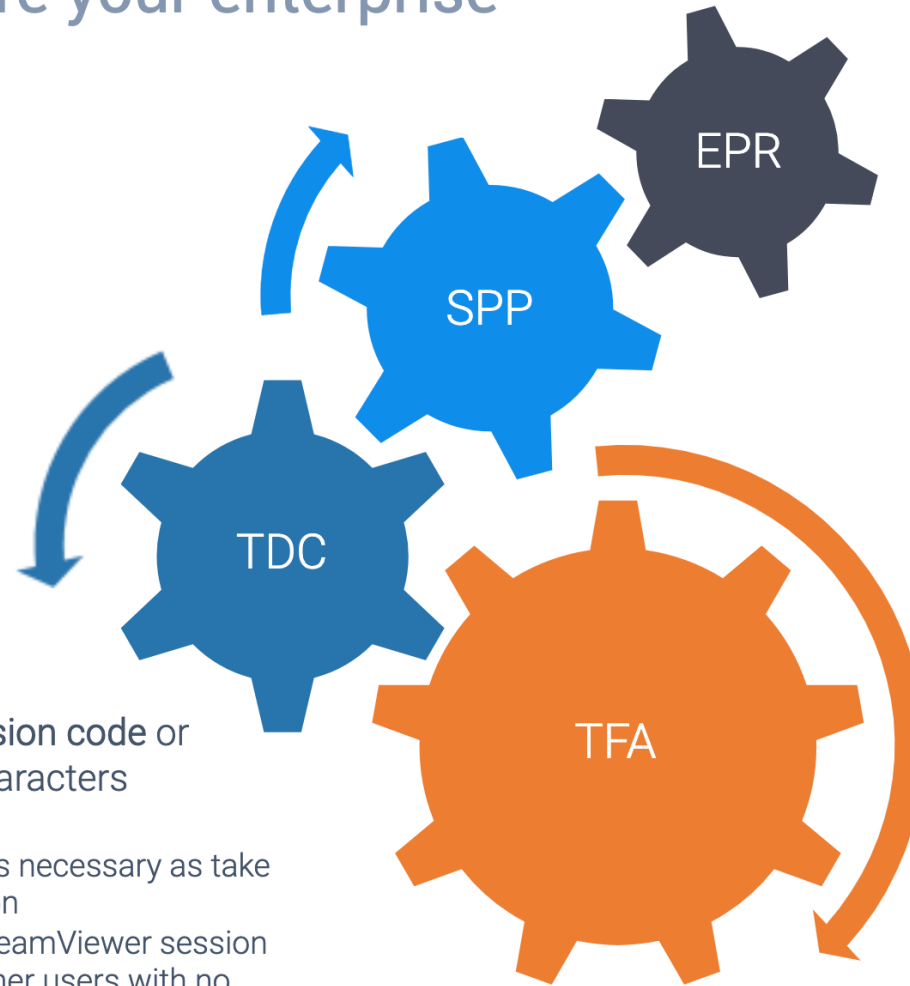
Enforced Password Reset

Anomalies found with TeamViewer account login locations will trigger an enforced password reset for the end user from our systems

Strong Password Protection

Connect through a randomly generated session code or password secured with 10 alphanumeric characters

- With session codes no hand over of credentials is necessary as take control is allowed only after end user confirmation
- Passwords can be set to regenerate after each TeamViewer session
- Easy access allows devices to be shared with other users with no need for configuring additional passwords



Trusted Device Confirmation

When TFA is not enabled TeamViewer keeps accounts secure through a preventive measure, Trusted Devices, authorizing every new device on which you sign in to your account for the first time through email

Two Factor Authentication

Add second factor (security code) generated by an authenticator app on your mobile device for



Infor as Software Company Stats



The 24 Best ERP Platforms for 2018

1. Abas ERP
2. Aquamatica
3. Aebtean
4. Ddisystem
5. Deltek
6. Epicor
7. Exact
8. IFS
9. Infor
- 10....
- 11....
- 12....
13. Microsoft



Infor Software Company Stats

• **168 Offices** around the world

• **176** new products

• **71,000,000+** cloud users

• **1,200** support experts

• **68,000** customers

• **17,000+** employees

• **1,750+** partners

The Infor logo consists of the word "infor" in a white, lowercase, sans-serif font, centered within a solid red square.The SunPlus logo features the word "SunPlus" in a large, light gray, sans-serif font. Above the text is a stylized graphic of a sun with wavy rays, rendered in a light beige color.

Infor SunSystems Stats

- **9,000+** Customers around the world
- **190+** Countries
- **Sophisticated multi-currency capabilities**
- **Real-time analytics and business intelligence**
- **Unified ledgers**
- **Enterprise data management**
- **Localized reporting**
- **Complex allocations**
- **Highly configurable software**

The Infor logo consists of the word "infor" in a white, lowercase, sans-serif font, centered within a solid red square.

infor



Platform

Infor OS

Infor CloudSuite™

Artificial Intelligence

Infor Coleman

Business Analytics

Birst®

Network

Infor Nexus

Infor CloudSuite™

Manufacturing

[CloudSuite Automotive](#)

[CloudSuite Aerospace & Defense](#)

[CloudSuite Industrial Enterprise](#)

[CloudSuite Industrial \(SyteLine\)](#)

Distribution

[CloudSuite Distribution Enterprise](#)

[CloudSuite Distribution](#)

[CloudSuite Equipment](#)

[CloudSuite WMS](#)

Consumer Products

[CloudSuite Fashion](#)

[CloudSuite Food & Beverage](#)

[CloudSuite PLM](#)

Finance

[CloudSuite Financials](#)

[CloudSuite Expense Management](#)

HR

[CloudSuite HCM](#)

[CloudSuite Workforce Management](#)

Services Industries

[CloudSuite Corporate](#)

[CloudSuite Healthcare](#)

[CloudSuite Public Sector](#)

Asset Management

[CloudSuite EAM](#)

[CloudSuite Facilities Management](#)

Sales & Service

[CloudSuite CRM](#)

[CloudSuite Configure Price Quote](#)

[CloudSuite Field Service](#)

Featured

ERP Solutions

[ALL PRODUCTS →](#)





It's all about Data

SunPlus



Big Data

Big data is a term that describes the large volume of data – both structured and unstructured – that inundates a business on a day-to-day basis.

SUNPLUS



Big Data

Market Segmentation Techniques

Demographic

- Age
- Sex
- Income
- Nationality
- Ethnicity
- Religion
- Education

Geographic

- Country
- Region
- City
- Population
- Climate
- Density
- Ports

Psychographic

- Personality
- Attitudes
- Interests
- Lifestyle
- Values
- Interests
- Opinions

Behavioral

- Purchases
- Payments
- Surfing behavior
- Churn rates
- Occurrences
- Interaction
- Comments
- Likes



Infor Solutions

Infor Operating Services

- Infor Ming.le™
- Infor ION
- Infor Document Management
 - Infor ION Business Vault
 - Infor BI





BI is about delivering relevant and reliable information to the right people at the right time.

SunPlus



BI

Different Forms of BI

- Operational Reports: Tithe/Offering volume, Top 10 Organizations
- AD-hoc Reports: Reports for End Users/Donors
- OLAP Analytics: Help to discover trends not evident in standard reports (“What if”)
- Data visualization: Visual Context
- Dashboards: based key performance indicator (KPI’s i.e. working capital)



BI Data Visualization



Dashboards | Best Practices | Toolbox

Save | Refresh | Filter | Settings

REGION Variance Analysis

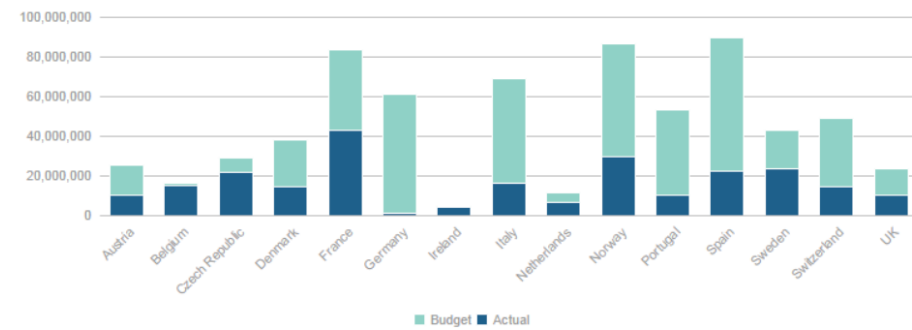
Filtered by MEASURE: Gross Margin, Period: All Years, POS: All Pos, PRODUCT: All Tires, CHANNEL: All Channels

MEASURE: Gross Margin, Period: All Years, POS: All Pos, PRODUCT: All Tires, CHANNEL: All Channels

REGION	Actual	Budget	Variance
Africa	192,708,923	75,722,386	-116,986,537
Asia	228,502,101	256,283,868	27,781,767
Australia/Pacific	30,632,215	10,895,511	-19,736,704
Europe	244,335,253	440,577,398	196,242,145
North America	-34,490,803	165,160,978	199,651,781
South America	253,836,997	326,067,158	72,230,161

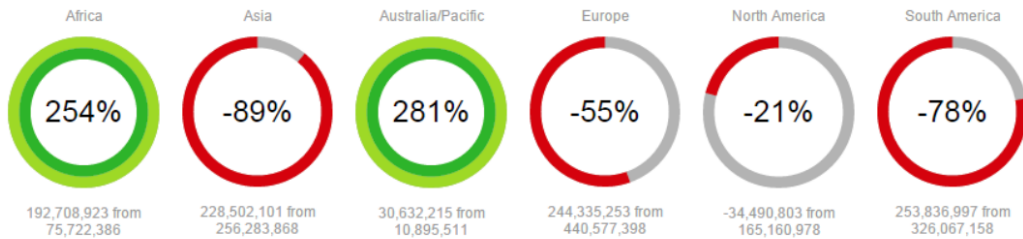
REGION Actual to Budget Comparison

Filtered by MEASURE: Gross Margin, Period: All Years, POS: All Pos, PRODUCT: All Tires, CHANNEL: All Channel



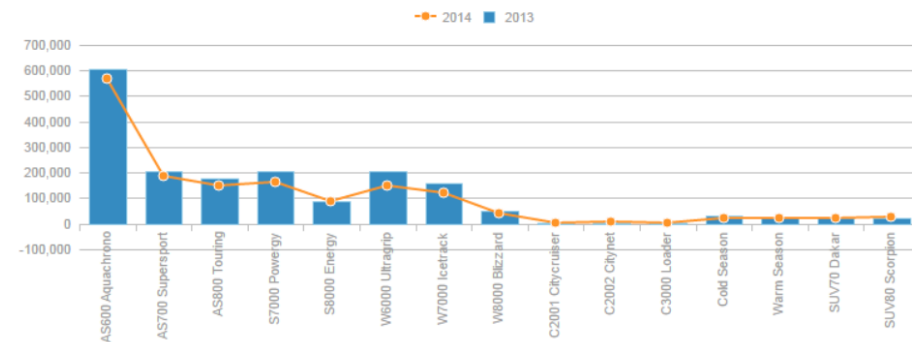
REGION Revenue to Budget

Filtered by MEASURE: Gross Margin, Period: All Years, POS: All Pos, PRODUCT: All Tires, CHANNEL: All Channels



PRODUCT Revenue

Filtered by PROFIT: Sales Volume, VERSION: Actual, CURRTYPE: Local Currency, LEVEL: IFRS, UNIT: Total Gro



Infor Solutions

Infor OS

The screenshot displays the Infor CRM dashboard interface. The browser address bar shows the URL: <https://xi2016.gdeinfor2.com/infor/61c8b7c8-060b-42f7-bac4-ae98f3bd1dac>. The dashboard is titled "CRM" and includes several widgets:

- Infor CRM Opps by Rep:** A pie chart showing the distribution of CRM opportunities by sales representative. The data is as follows:

Rep	Percentage
Lee Hogan	20%
Cathy I	19%
Ed Martinez	14%
Dan Barret	13%
Rajeev Mitra	12%
Emberay	4%
Kim	3%
Linda Walsh	3%
Ken Dryden	1%
- Infor CRM Open Opps:** A donut chart showing the distribution of open CRM opportunities. The data is as follows:

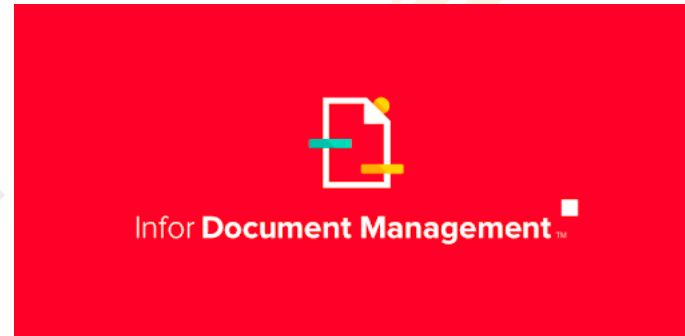
Category	Percentage
1000 t...	1%
11%	11%
1,000...	18%
3,00...	25%
10,000...	45%
100,00	100%
- Infor CRM Campaign Count:** A horizontal bar chart showing the count of campaigns for various users. The data is as follows:

User	Count
Lee Hogan	~200
Dan Barret	~180
Ed Martinez	~160
Linda Walsh	~140
Cathy Hughes	~120
Georgine Ekels	~100
Derek Murray	~80
Manuel Fuentes	~60
Administrator	~40
Hans Stochter	~30
Kim Lee	~20
Jean Grant	~10
Rajeev Mitra	~5
Ken Dryden	~2
Brian McNulty	~1
- Notes:** A text area containing information about Infor Ming.le and Infor ION integration, including details about on-premise customer costs and requirements for ADFS and Infor CRM 8.3.
- Bookmarks:** A list of bookmarks for ERP and CRM.
- Posts:** A feed of user posts, including messages from Infor User and account contacts.
- Grid Applications:** A list of applications with status indicators and navigation arrows, including DocumentArchive, Homepages, IONDesk, IONSearch, IONService, and SAMLSessionProvider.
- ION API Context Widget:** A widget at the bottom left showing a DrillBack URL and a LogicalId parameter.



Infor Solutions

Infor Document Management



Infor Document Management is a central repository where you can maintain your common business rules for creating documents, as well as all of your documents.



Infor SunSystems

Versions:

.- 5.2

.- 5.4

.- 6.1

.- 6.2

.- 6.3

.- 6.4



SunPlus



Infor SunSystems

SunSystems 5.4. Why is urgent to migrate?



.- Infor is still supporting SunSystems 5.4, but is no longer releases updates and fixes for that version. Running software that is no longer receiving security patches and improvements is not recommended.

SUNPLUS



Infor SunSystems

SunSystems 5.4. Why is urgent to migrate?



.- 5.4 is supported on Windows Server 2003 and Windows Server 2008 only. For SQL, Version 2005 and 2008 are the only versions supported. Microsoft officially ended support for SQL 2008 in July 2019, and they are planning to end support for Microsoft Windows Server 2008 on January 14, 2020

“...Come out of her, my people” Revelation 18:4



Infor SunSystems



SunSystems 6.3/6.4. 64Bits

SunPlus



Technology Innovation

Special Testimonies On Education

E.G. White

“God entrusts men with talents and inventive genius, in order that his great work in our world may be accomplished. The inventions of human minds are supposed to spring from humanity, but God is behind all. He has caused that the means of rapid traveling shall have been invented, for the great day of his preparation”.

